

TECHNICAL SPECIFICATION

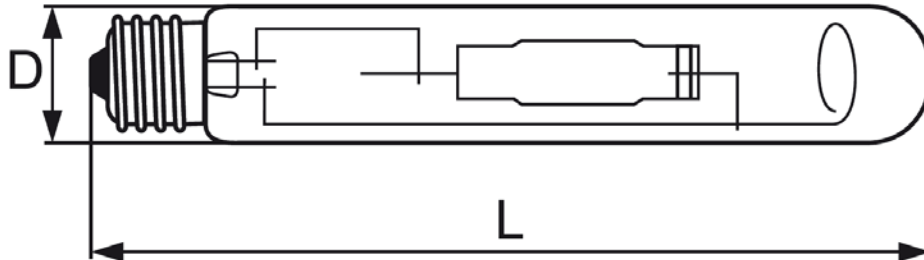
Metal Halide Lamps T



Technical data

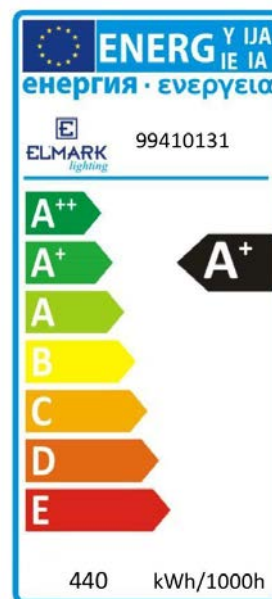
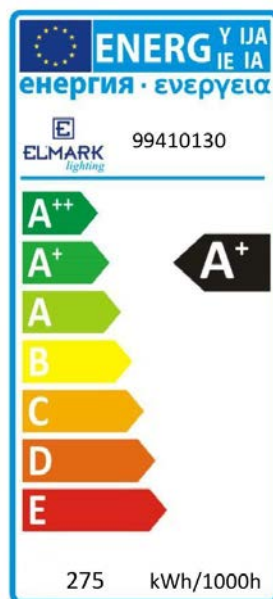
- Power supply: Control gear
- Power: 250W; 400W
- Colour rendering index: $R_a \geq 80$
- Colour temperature: 4200K
 - Rated LLMF at 2,000h: 0.99
 - Rated LLMF at 4,000h: 0.98
 - Rated LLMF at 8,000h: 0.95
 - Rated LLMF at 16,000h: 0.85
- Base (standard designation): E40
- Average lifetime: 16000h
 - Rated lamp survival factor at 2,000h: 0.99
 - Rated lamp survival factor at 4,000h: 0.98
 - Rated lamp survival factor at 8,000h: 0.95
 - Rated lamp survival factor at 16,000h: 0.80
- Lamp mercury content: max. 30mg
- Dimmable: No

Variants and dimensions



Watt	Lumens (lm)	Colour temp. (K)	Current (A)	Nominal voltage (V)	Ignition Voltage (kV)	Cp μ F	Colour	Size (mm)		Catalogue number	Packaging (pcs)
								L	D		
250W	21000	4200	3.00	100	3.3 ÷ 5	32	clear	210	46	99410130	45
400W	36000	4200	4.50	100	3.3 ÷ 5	45	clear	265	46	99410131	35

Energy efficiency



Barcodes

Barcode	Catalogue number
3800131163905	99410130
3800131163912	99410131

Standards

EN 5015

EN 61547

EN 61167

EN 62035

EN 62321

